

Giant Cerebral Aneurysm

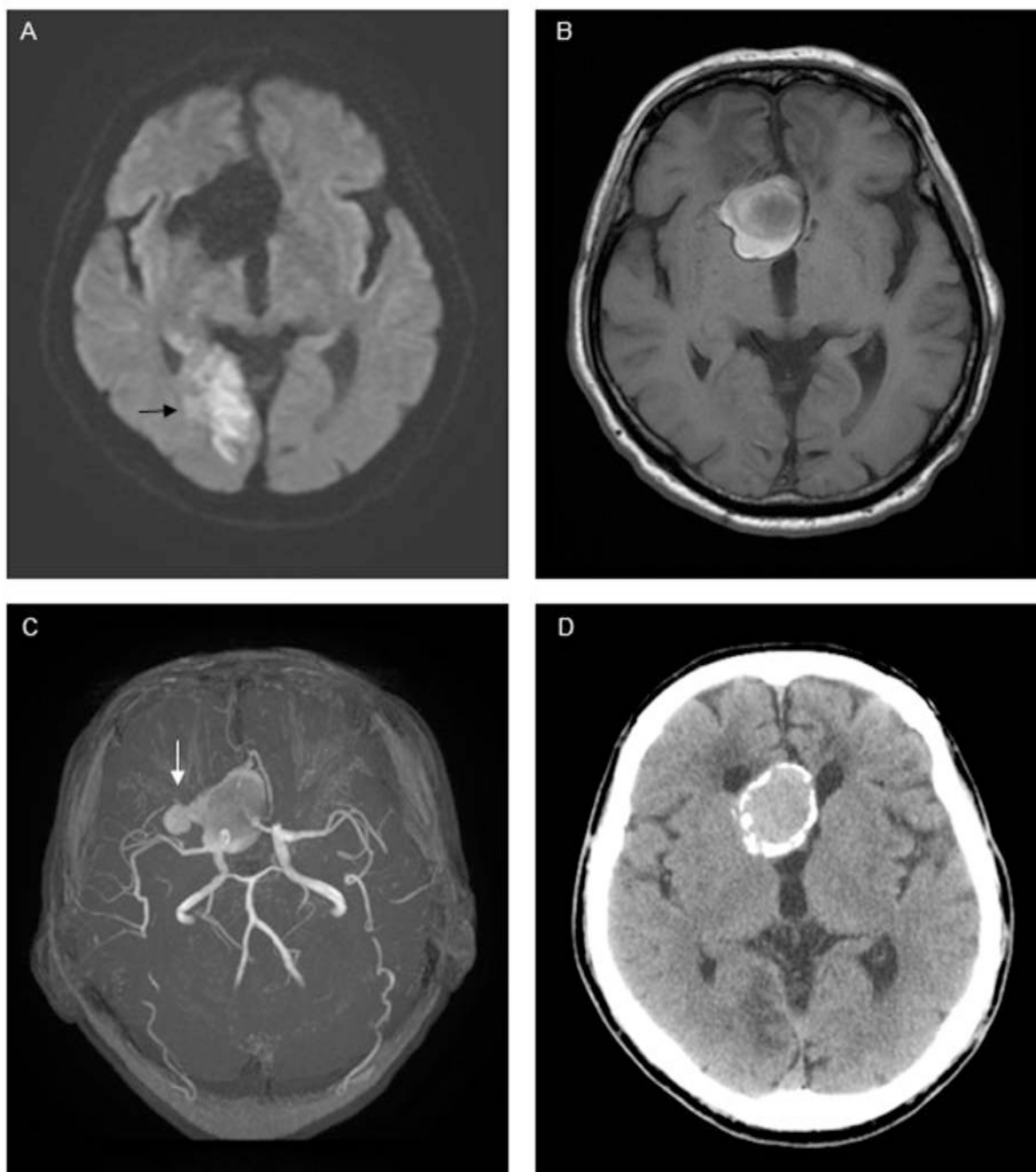
Akira Ishii^{*}; Tatsuya Kawasaki; Yukie Kushimura; Tadaaki Kamitani

***Akira Ishii**

Department of Cardiology, Matsushita Memorial Hospital, Osaka, Japan

Phone: +81-66992-1231, Fax: +81-66992-4845; Email: ishii.akira001@jp.panasonic.com

Clinical Images



Description

A 65-year-old man presented with a 6-day history of visual dysfunction. He had a previous history of subarachnoid hemorrhage at 52 years; a giant cerebral aneurysm was reportedly found but surgical procedure was not performed because of the unacceptably high risk. Magnetic resonance imaging showed hyperintense signals in the right occipital and temporal lobes on diffusion-weighted images (Panel A, arrow), accompanied by a giant aneurysm (Panel B, 35 mm by 30 mm) with a daughter sac (Panel C, arrow). A giant aneurysm is known to have a high rupture rate, e.g., $\geq 75\%$ within 3 years when the diameter is ≥ 25 mm [1]. Fortunately, his aneurysm has remained stable for more than 10 years despite having other risk factors for rupture, such as the anterior communicating artery location, the history of subarachnoid hemorrhage, and the daughter sac [1]. Calcification might be effective in protecting the aneurysm from re-rupture, as shown by computed tomography (Panel D).

References

1. UCAS Japan Investigators, Morita A, Kirino T, Hashi K, Aoki N, Fukuhara S, Hashimoto N, Nakayama T, Sakai M, Teramoto A, Tominari S, Yoshimoto T. The natural course of unruptured cerebral aneurysms in a Japanese cohort. *N Engl J Med* 366:2474-82, 2012.

Manuscript Information: Received: May 18, 2016; Accepted: August 16, 2016; Published: August 18, 2016

Authors Information: Akira Ishii^{1*}; Tatsuya Kawasaki¹; Yukie Kushimura²; Tadaaki Kamitani¹

¹Department of Cardiology, Matsushita Memorial Hospital, Osaka, Japan

²Department of Neurology, Matsushita Memorial Hospital, Osaka, Japan

Citation: Ishii A, Kawasaki T, Kushimura Y, Kamitani T. Giant cerebral aneurysm. *Open J Clin Med Case Rep.* 2016; 1152

Copy right statement: Content published in the journal follows Creative Commons Attribution License (<http://creativecommons.org/licenses/by/4.0>). © Ishii A 2016

Journal: Open Journal of Clinical and Medical Case Reports is an international, open access, peer reviewed Journal focusing exclusively on case reports covering all areas of clinical & medical sciences.

Visit the journal website at www.jclinmedcasereports.com